

FITC Anti-Human CD10 Monoclonal Antibody



天津三箭生物技术股份有限公司
Tianjin Sungene Biotech Co., Ltd.
精准 高效 稳定 Precision Efficient Stable

Catalog Number	Vial Size
H20103-02G	25 tests
H20103-02G	100 tests

Market | 400-621-0003
marketing@sungenebiotech.com

Support | 022-66211636-8024
techsupport@sungenebiotech.com

Web | www.sungenebiotech.com

Important Note: Centrifuge before opening to ensure complete recovery of vial contents.
This product is guaranteed up to one year from purchase.

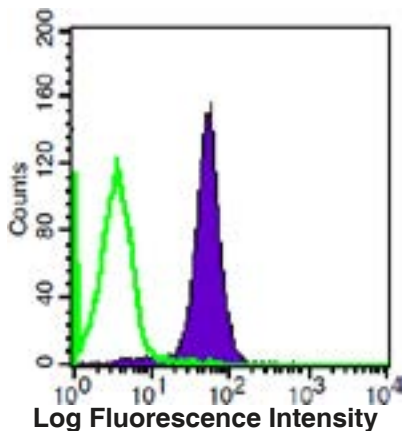
Purified Antibody Characterization

Clone	Isotype	Reactivity
HI10a	Mouse IgG1	Human

Description

CD10 is a 100 kD neutral endopeptidase and a member of the metalloprotease family. It is a type II transmembrane protein also known as common acute lymphoblastic leukemia antigen (CALLA), enkephalinase, and neprilysin. CD10 is expressed on B cell precursors, T cell precursors, and neutrophils. CD10 is involved in B cell development and has been shown to bind opioid enkephalins, bradykinin, angiotensins I and II, and other biologically active peptides.

Illustration of Immunofluorescent Staining



Human peripheral blood granulocytes stained with FITC anti-human CD10

Product Information

Conjugation: FITC

Formulation: PBS pH 7.2, 0.09% NaN₃, 0.2% BSA

Storage: Keep as concentrated solution. Store at 4°C and protected from prolonged exposure to light. **Do not freeze.**

Application: Recommended Application: FC

Usage: Each lot of this antibody is quality control tested by immunofluorescent staining with flow cytometric analysis (The amount of the reagent is suggested to be used from 20 µL to 5 µL per 100 µL of peripheral blood. Please check your vial). Since applications vary, the appropriate dilutions must be determined for individual use.

References

- [1] Shipp M, et al. 1993. Blood 82:1052.
- [2] Lu B, et al. 1995. J. Exp. Med. 181:2271.

For Research Use Only.